

Directions For Use:

Cen-Pe-Co Gas-O-Klenz may be added directly to the fuel tank or bulk fuel storage tank. Gas-O-Klenz will not settle out and will not harm catalytic converters or engine parts.

Quick Clean: Add 1 gallon of Gas-O-Klenz per 100 gallons of gasoline (1 pint per 12½ gallons).

Keep Clean: Add 2 quarts of Gas-O-Klenz per 100 gallons of gasoline (1 pint per 25 gallons).

Engine Storage: Add Gas-O-Klenz to the vehicle tank at the rate of 1 gallon per 100 gallons of gasoline (1 pint per 12½ gallons). Run the engine several minutes to distribute Gas-O-Klenz's rust-stopping power.

Concentrated Pints: Add one pint of concentrated Gas-O-Klenz to 40 gallons of gasoline. Double this rate for quick clean or engine storage.

Available Container Sizes:

55 gallon drum
35 gallon drum
20 gallon drum
5 gallon Mil Can (plastic with fuel dispensing nozzle)
5 gallon pail
1 gallon bottle (6 per case)
1 pint bottle (24 per case)



Cen-Pe-Co Also Blends Heavy-Duty Lubricants:

- ◆ Made with 100% pure paraffin de-waxed base oil.
- ◆ Greater lubricity assures reduced wear and improved fuel efficiency.
- ◆ Superior film strength protection during startup and extreme operating conditions.
- ◆ Fortified with extra heavy-duty synthetic additives for longer drain protection.
- ◆ Additional rust inhibitors preserve expensive equipment during storage.

Your Local Representative:

Lubricants & Fuel Solutions

Erich Haesche

607-591-1156

Serving 13 Counties in Central NY

Shipped Factory Direct - Not Available in Stores

Cen-Pe-Co also manufactures Columbia® Paints & Roof Coatings



Manufactured By:

CENTRAL PETROLEUM COMPANY
CLEVELAND, OHIO • WALCOTT, IOWA

www.cenpeco.com

2011 ©
PN# GOK211

cen-pe-co
LUBRICANTS

GAS O KLENZ®

The Complete Multi-Functional Gasoline Additive and Conditioner

- ✓ IMPROVES FUEL ECONOMY
- ✓ IMPROVES ETHANOL BLENDED FUELS
- ✓ STABILIZES FUEL
- ✓ CLEANS AND LUBRICATES
- ✓ RESTORES POWER AND PERFORMANCE
- ✓ REDUCES EVAPORATION
- ✓ DOES NOT CONTAIN ALCOHOL

FUEL ADDITIVE SPECIALISTS SINCE 1940

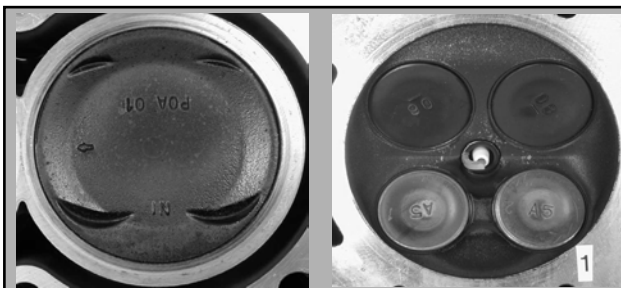
CEN-PE-CO GAS-O-KLENZ was developed in the early 1980's when the use of Gasohol (ethanol enhanced) fuels started. Ethanol is now widely used across the country, in varying amounts from 10% (E10) to as much as 85% (E85), as a substitute for reliance on crude oil. Ethanol is corn based and an excellent octane booster.

Cen-Pe-Co Gas-O-Klenz is a complete multi-functional additive for use in all grades of gasoline and gasohol (ethanol blends). It cleans injectors, intake valves, and combustion chambers, as well as stabilizing fuel in storage.

Gasoline, including ethanol blends, degrades during periods of storage. If left in seasonal equipment, it can form gums and create operability problems. Degraded fuels are prone to forming deposits, so burning them can cause engine operability problems that last long after fresh gasoline is added. Cen-Pe-Co Gas-O-Klenz stabilizes gasoline including ethanol blends, in storage and in seasonal equipment to keep it fresh, even after months of storage.



The many uses of Gas-O-Klenz include: the family car, classic car, boat, personal water-craft, motorcycle, snowmobile, ATV, RV, lawnmower, weed-whacker, generator, or any of the thousands of other types of equipment that use 2-cycle or 4-cycle gasoline engines.

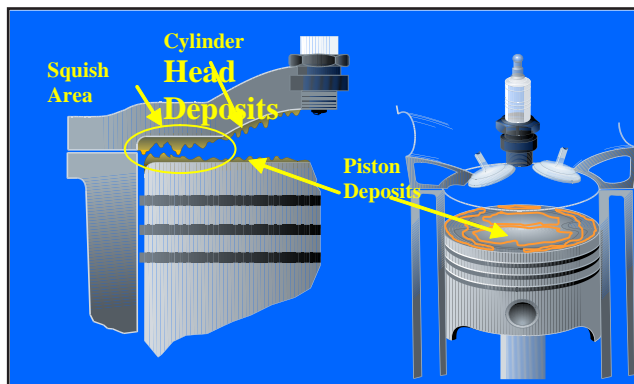


A 10% ethanol blend is more prone to deposit formation than either gasoline or ethanol alone.

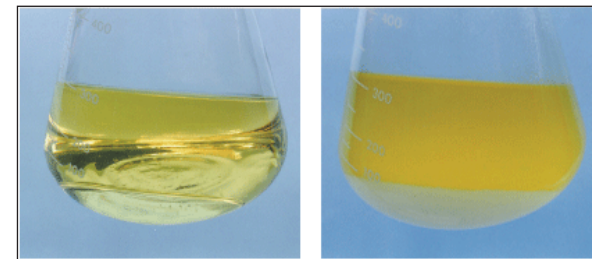
Injector cleaners are cheap and easy to find. Unfortunately, many of them increase intake valve deposits. Intake valve deposit additives are harder to come by, and they tend to increase combustion chamber deposits. Combustion chamber deposit cleaners are few and



relatively hard to find. Combustion chamber deposits increase the engine's octane appetite and can hurt fuel efficiency.



Cen-Pe-Co Gas-O-Klenz removes combustion chamber deposits, allowing the engine to operate more efficiently and on lower octane gasoline.



Phase Separation happens when ethanol blended fuels pick-up more water than the ethanol can absorb, reaching its saturation point. At this time (as shown on the right) the ethanol and water will separate, actually coming out of solution and forming two distinct layers in the tank.

Several gasoline additives claim to stop phase separation, but we agree with Popular Mechanics magazine when they say, "It's unlikely that they can eliminate the phenomenon." Gas-O-Klenz delays phase separation, but if gasoline contains so much water that 10% alcohol will not suspend it, you probably have a bigger problem than a small amount of any additive can fix. A good fuel additive will save you money, but it does not allow for carelessness in fuel handling.



The sample on the left was treated with Cen-Pe-Co Gas-O-Klenz, the one on the right a popular stabilizer. Both bottles were filled to the exact same amount and left uncovered for an equal amount of time. As you can see, Gas-O-Klenz kept the fuel from degrading as well as reducing the amount of evaporation.